

# BOLT®

BREAKTHROUGH ONE-KEY LOCK TECHNOLOGY

# J-MOUNT WRANGLER JL+ GLADIATOR

FOR SPANISH AND FRENCH TRANSLATIONS GO TO:  
[HTTP://WWW.BOLTLOCK.COM/ABOUT-STRATTEC/BOLT-LITERATURE](http://www.boltlock.com/about-strattec/bolt-literature)

PARA TRADUCCIONES EN ESPAÑOL Y FRANCÉS VISITAR:  
[HTTP://WWW.BOLTLOCK.COM/ABOUT-STRATTEC/BOLT-LITERATURE](http://www.boltlock.com/about-strattec/bolt-literature)

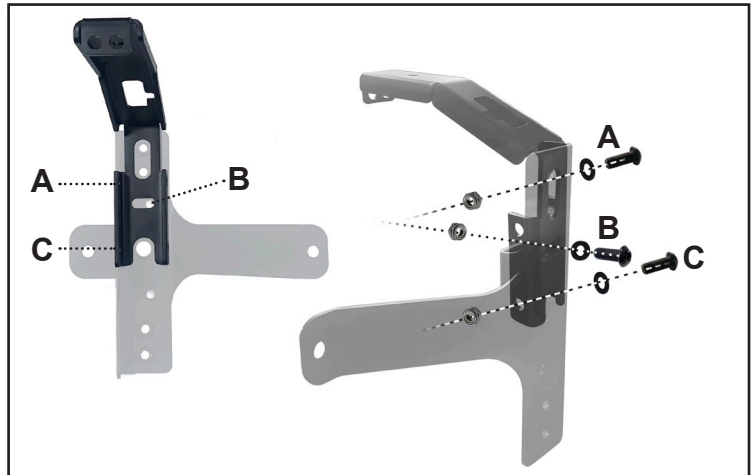
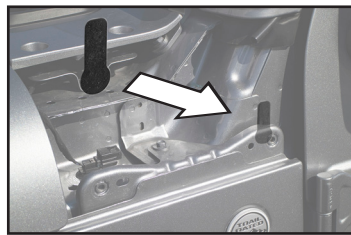
POUR LES TRADUCTIONS EN ESPAGNOL ET EN FRANÇAIS, ALLEZ À :  
[HTTP://WWW.BOLTLOCK.COM/ABOUT-STRATTEC/BOLT-LITERATURE](http://www.boltlock.com/about-strattec/bolt-literature)



## Assembly Instructions

1. Determine which side of the vehicle you plan to mount the Jack on (Passenger or Driver)
2. If on the Passenger side, remove vehicle antenna by unscrewing it from its base.

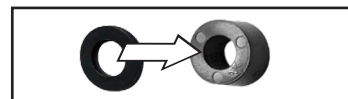
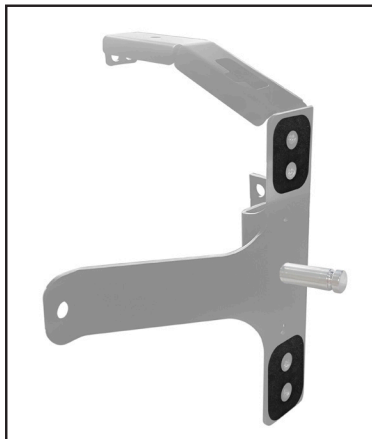
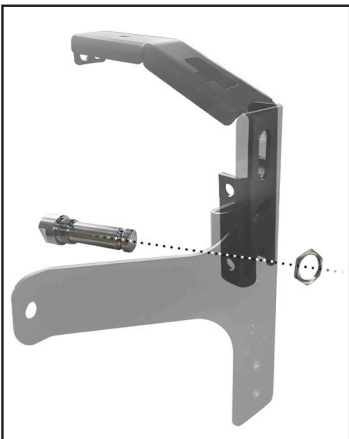
*Driver side shown in images.*



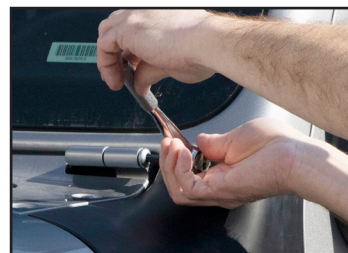
3. Using a T30 Torx Wrench remove (4) Cowl screws and remove Cowl. Retain (2) screws for step 6.

4. Place Gasket on A-Pillar directly behind rear screw.
5. Replace Cowl.
6. Replace top (2) Cowl Screws.

7. Attach Brace to Jack-Mount Bracket using (3) 20mm Screws, (3) Flat Washers and (3) Nuts. Line up image as shown.



10. Find (2) Spacers and apply Gasket Ring to one end of each and set aside.



11. Using a T45 Torx remove Hinge from window Hinge.



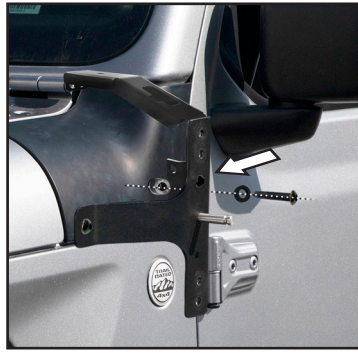
12. Insert Barrel Nut in Brace hole closest to the windshield.

8. Insert Locking Pin through hole in Bracket assembly. Thread Panel Nut onto Locking Pin and tighten.

9. Attach Gaskets to top and bottom of Bracket assembly around threaded holes. Press firmly in place.



13. Thread Barrel Nut onto window hinge. Using 8mm allen wrench turn it onto the post a few turns but do not tighten fully.



14. Place both Spacers (Gasket side against vehicle) into opening after removing bottom screws in Step 3.



15. Install Lock Washer and 45mm Screw toward rear of the Jeep into the screw opening.



18. Fully tighten Barrel Nut using 8mm allen wrench.

16. Install Lock Washer and 45mm Security Screw toward front of the Jeep.

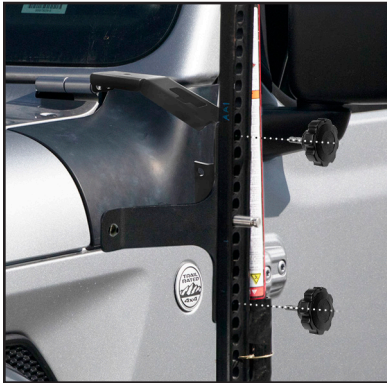
17. Tighten both Screws using 5mm allen wrench.



19. With hood open install Cotter Pin through hole in Security Screw.



20. Attach Jack to Bracket assembly with Locking Pin extending through hole in Jack.



21. Install (2) Knobs through Jack and into threaded holes in Bracket. Use the threaded holes that line up best with the openings in the Jack you are using. (Hole spacing in the Jack varies by manufacturer).



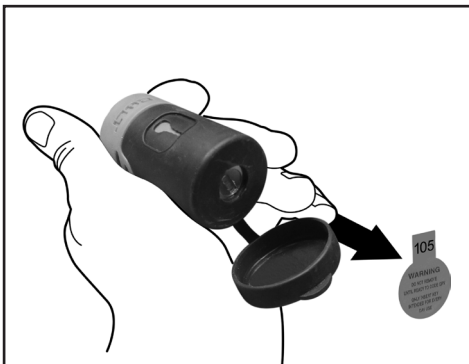
22. If on Passenger side, re-install vehicle antenna through opening in Bracket if applicable.

Repeat similar steps for included optional ditch light mount on opposite side of vehicle.

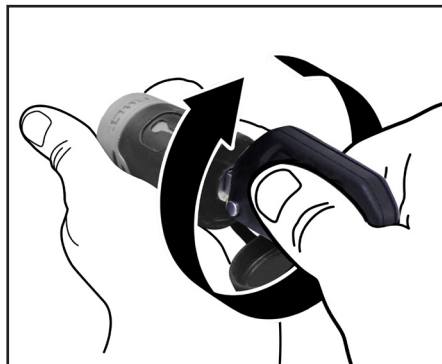


## Check fitment of Jack Mount before coding BOLT Lock

### Instructions for BOLT® Lock coding



Read and remove warning sticker - remove key from key chain.



Fully insert vehicle key. Rotate clockwise while maintaining full key insertion until it stops **Avoid pulling up or down on key during coding.**



The lock is now successfully coded - Insert, rotate, and extract key 3X to ensure the lock is successfully coded.



Push BOLT Lock securely onto Locking Pin.